

SUMMER 2010

John Britt Workshop

We are delighted to announce that John Britt has been scheduled to do a 3-day workshop for The Clay Connection on October 1–3, 2010.

John Britt has been a potter and teacher for over 25 years who lives in western North Carolina. John is primarily a self-taught potter who has worked and taught at universities, colleges and craft centers across the country, including the Penland School of Crafts where he served as the Clay Coordinator and then, as the Studio's Manager. He is the author of *The Complete Guide to High-Fire Glaze: Glazing & Firing at Cone 10*, which was published by Lark Books in 2004. He was also the juror for the book *500 Bowls* and Technical Editor for the book *The Art and Craft of Ceramics*. John has written numerous articles for ceramics publications including: *Ceramics Monthly*, *Ceramic Review*, *Studio Potter*, *Clay Times*, *Ceramic Technical* and *The Log Book*. He is currently a studio potter in Bakersville, North Carolina and teaches glaze chemistry, throwing, glazing and firing workshops. See: <http://johnbrittpottery.com/>



He will be talking about glaze-making, firing (including Cone 6 reduction), and anything else you want to know about clay! The workshop will include a firing of participants' work!

Stay tuned, details to follow! You won't want to miss this event.

Website update
(www.theclayconnection.org)

If you haven't visited The Clay Connection's website recently you're in for a big surprise! Jim and Marianne have been working hard to make the

Contents

| | |
|--|----|
| John Britt Workshop..... | 1 |
| Website Update (www.theclayconnection.org)..... | 1 |
| Susan Halls at the 2011 Clay Conference..... | 3 |
| Annual Potluck Dinner..... | 3 |
| The 2010 High School Clay Competition and Exhibit..... | 4 |
| Mother's Day Spring Sale..... | 6 |
| To Facebook or Not to Facebook — That Is the Question?!..... | 7 |
| (With apologies to William Shakespeare)..... | 7 |
| Updated Membership Directory..... | 9 |
| Volunteer Opportunities..... | 9 |
| Calendar of Upcoming Events..... | 10 |
| Member News and Achievements..... | 11 |
| Call For Entries..... | 11 |
| An Exciting New Exhibition Opportunity for Clay and Glass Artists..... | 11 |
| Workhouse Arts Center..... | 12 |
| Did you know that..... | 12 |
| Studio Tips and Shortcuts..... | 12 |
| Workshop Reviews..... | 13 |
| Upcoming Workshops & Events..... | 15 |
| Classified Ads..... | 17 |
| From the President..... | 18 |
| Membership Form..... | 19 |

website more user friendly and include more content. In the previous issue of this newsletter Jim gave us a rundown of the website's updated layout. In the past few months, Jim has been busy improving the content.

By now, some of you may have noticed that the Members Gallery has changed. If you click on a thumbnail image, a larger image appears on the screen complete with a text title under the picture. Not many members have taken advantage of this great venue to showcase their work. It's simple to do. Send the following information to webmaster@theclayconnection.org:

- Name as you want it to appear
- Studio name
- Web site, if any
- 1-6 pictures of your work (the higher the resolution the better)
- Brief statement about what your work means to you

We now have a **Community Sales** page in the Resources section. This is the spot for our members to advertise their own "studio sales" or other group sales. It's another way to make your Clay Connection membership work for you.

And if you haven't visited the **Potter's Resources** pages you're in for a big surprise. That section now includes information on conferences, local suppliers, kiln repair, and recreational classes in Maryland, DC and Virginia.

The **Online Resources** page has links to information on organizations and shows, glazes, tools, safety, studio maintenance, photography, and miscellaneous information such as how to build a sink trap. We've added to the raku, crystalline glazes, and a number of other categories. We've also set up a couple of new categories (salt/soda, wood, saggar, crystalline glazes, and pit/barrel firing) and added images. You can get to them quickly via the special interests submenu on the online resources page.

There is now a **Business Licensing** page with links to information on federal and state requirements, as well as Small Business Development Centers.

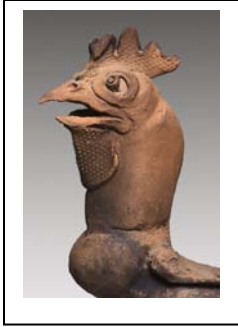
Under **Video Training Resources** you'll find a treasure trove of links to almost 200 videos organized under various topics including: basic information; off the hump; double wall; decoration; lids; handles; pitchers and spouts; teapots; projects; firing; cups; bowls; cylinders; plates; vases; and raku. The video training page has been graced with the addition of videos by some of our Clay Connection members. Along with **Nan Rothwell's** videos on making a pitcher and a wiggle wire lamp, we've also added a seven part series by **Jane Cullum** titled "How to Throw Clay on a Pottery Wheel".

The section on **Marketing** includes information on selling online, articles on marketing, on craft shows, and on planning your booth. And you'll also find the list of videos available in The Clay Connection's lending library as well as past issues of *The Cracked Pot*.

Finally, under Yearly Events, you can find information on our two recent events: the High School Clay Competition and Award and our Annual Potluck Dinner, including great photographs of those events.

~ ~ ~ ~ ~

Susan Halls at the 2011 Clay Conference



Susan Halls will join Posey Barcopoulus and Hayne Bayless as a Main Presenter at next year's Mid-Atlantic Clay Conference. She was born in Gillingham, Kent, and is best known for her representations of animals. She trained at Medway College of Art (1984–1988) and the Royal College of Art (1988–1990).

Since childhood, she has been obsessed and curious about animals and their character and she drew, painted and modeled them. Her animal sculptures convey "a kind of animal truth"

rather than the mere appearance of things. Dogs, horses, cats and monkeys are of major interest, although she is interested in many other species. All ceramic techniques fascinate her and she uses whatever process best suits the subject to express and develop the form, which is sometimes abstracted to suggest only a minimum reference to the animal. She uses paper clay mixed with nylon fiber. Occasionally pieces are fired at stoneware temperatures but most are low fired by low-technology techniques: sawdust, smoke or wood firing. The animal sculptures incorporate metal elements such as nails and steel pieces. She has also made large sculptural shoe forms and dinosaurs.



~ ~ ~ ~ ~

Annual Potluck Dinner

After much rescheduling due to the winter snow storms, our Annual Potluck Dinner was held on April 17. Dana Lehrer Danze and her husband once again graciously opened their lovely home for this event, which this year included members of Lee Arts Center. As always, the food was superb! Potters are such great cooks!

Steve Wright and Jennie Avila (<http://www.wrighthanddrums.com/>) performed after dinner. Steven made all the clay drums that were used in their performance. He explained how the drums are made, noting that they are thrown in three pieces, trimmed very thin, joined, decorated, then fired to cone 02, which is "overfired" for the clay he uses, but gives it a better voice. Jennie writes most of the songs that were performed, and plays the guitar as well as the drums.



Curtis Haymore, Julie Sedell, Lark Lovering, and Sheila Avruch show off their new Clay Connection t-shirts that everyone in attendance received at the end of the festivities.

Participants brought nonperishable food to donate to the local food pantry. Seventy-five pounds of food were donated to the Arlington Food Assistance Center.



The 2010 High School Clay Competition and Exhibit

As a part of its charter to promote clay art in the Washington Metropolitan area, The Clay Connection began sponsoring an annual High School Student Clay Competition & Exhibit in 1998. This year's event was held on May 19 at the Dr. Oswald Durant Memorial Center in Alexandria.

The Competition has four main goals:

1. Recognize the best of student ceramics.
2. Allow students to see their work displayed in a professional setting.
3. Offer students the opportunity to have their own work reviewed.
4. Expand opportunities for student to see the work of others.

Students attending high schools in the Northern Virginia area are eligible to submit work in up to two of four categories: hand-built, mixed media, sculpture, and wheel-thrown. All work was reviewed by a professional potter who presented awards in each of the four categories based on quality, creativity, aesthetics, and use of clay as an art/craft medium. This year's judge was Blair Meerfeld, Chairman of The Art League Ceramics Department and an internationally recognized ceramic artist.



The 2010 Best-in-Show award went to Preston Brown, a junior at Episcopal High School. First, second and third prizes were distributed in the four categories.

Wheel Thrown Ceramics

- 1st Prize: Pen Jones, Senior, Episcopal High School
2nd Prize: Paula Cook, Sophomore, Washington-Lee High School
3rd Prize: Sean McShea, Senior, Robinson Secondary School

Mixed Media

- 1st Prize: Inez Paz, Sophomore, Centreville High School
2nd Prize: Kelsy Kallapos, Junior, Centreville High School
3rd Prize: Dana Raphael, Freshman, Washington-Lee High School

Hand Built Ceramics

- 1st Prize: Gene McCarthy, Senior, Episcopal High School
2nd Prize: Eve Spielberg, Senior, McLean High School
3rd Prize: Abby Evans, Junior, McLean High School

Sculptural Ceramics

- 1st Prize: Carmen Judy, Senior, South Lakes High School
2nd Prize: Taylor Fox, Junior, Brentsville High School
3rd Prize: Vincent Mariano, Senior, Episcopal High School

Special recognitions were also awarded to area art teachers, as follows.

Teacher Recognition

| | |
|------------------------------------|---------------------|
| Centreville High School | Rory Marcaccio |
| Robinson Secondary School | Joe Dailey |
| St Stephens & St Agnes High School | Terry de Bardelaben |
| South Lakes High School | Anne Sykes |
| T C Williams High School | Holly Langenfeld |
| Washington-Lee High School | Joan Bickelhaupt |
| Episcopal High School | Elizabeth Volicek |
| Brentsville District High School | E. Blair-Nussbaum |

Prizes were contributed by the following companies:

- MKM Pottery Tools
- Mudtools
- Euclid Kilns
- Ceramics Monthly and Pottery Making Illustrated
- Brent/AMACO—American Clay Company, Inc.
- Dolan Tools
- Sheffield Pottery, Inc.
- Mecca Pottery Tools
- Pleasant Valley Pottery
- Mayco

As in the past, Steve Gammicchia played a pivotal role in making this event possible. Other Clay Connection members whose contribution was vital to making this event possible are Curtis Haymore, Olga Shure, Barbara Oksanen, and Roberta Couver.



This is one of our most important events. Not only does it fulfill our mission, but it provides inspiration and encouragement to young artists and much needed recognition and supplies to our area's art teachers. It is a shame that more Clay Connection members have not participated in this worthwhile effort, particularly given the support evinced in the member survey.

In order to ensure that we can continue to carry out this important event, the Board wants to establish a standing committee. We are looking for volunteers to

take on this worthwhile effort. Steve has already put together a folder of information to guide the committee on the steps that need to be taken to put on a successful competition. Please contact Ann Granger, our Volunteer Coordinator (annthepotter@gmail.com), and tell her that you'll be able to help put together next year's high school competition and exhibit.

~ ~ ~ ~ ~

Mother's Day Spring Sale

The Board is working hard to revitalize opportunities for Clay Connection members to exhibit and sell their work. To that end, we sponsored a Spring Sale just in time for Mother's Day, on May 8th.

We found a wonderful new venue in Annandale that proved to be really beautiful and ideally located. John Calvin Presbyterian Church on Columbia Pike has a wonderful hall with an entire wall of windows looking out to a wooded area, with ample parking. The venue is smaller than the Vienna Community Center, but it easily accommodated the 15 participating potters.



Dick White did an excellent job of organizing and marketing the sale, and in its aftermath, providing us with sales information that may be of interest to everyone. The average sales price was \$25.35 and the median price was \$22 (this means that half the pieces sold were priced above \$22 and half were priced below \$22). At the customer level, 54% bought one item, 23% bought two items and 23% bought between three and seven items. The average purchase amount was \$48 and the median purchase was \$40, with two-thirds of customers spending between \$15 and \$80.

Sellers included, Linda Moeser, Rebecca Zweibel, Brigitta Feinberg, Amy Wandless, Marianne Cordyack, Bruce Glassford, Dana Lehrer Danze, Laurie Erdmann, Michael Hough, Marvel Adams, Klaudia Levin, Virginia Ainslie, Wendy Zaidman, Dick White, and Grace Lynt.

Our marketing effort included mailing out postcards to our existing mailing list of customers, placing signs on the median in the area of the venue, advertising on local radio and television, advertising in local and area-wide newspapers, and church and neighborhood bulletins. In addition, individual participants sent out postcards and did their own advertising. Despite these efforts, we all agree that the crowd was disappointingly thin and sales



were't what they could have been. After careful consideration, we believe that in addition to the general economic climate, the reason for this lackluster performance may rest in large part on the fact that we are new at this venue. It should be noted that one of the reasons that we decided to try a new venue was because of the feeling that we may be exhausting our Vienna customers and the consensus that it would be a good idea to establish Clay Connection sales as an existing event in a new market (i.e., Annandale and surrounds).

The Board has decided that we will hold a Mother's Day Spring Sale again next year on the weekend before Mother's Day at the same venue (John Calvin Presbyterian Church in Annandale). We would like to establish a standing committee to organize this event and are looking for volunteers, especially in the area of advertising and marketing. As with all other Clay Connection volunteer positions, written guidelines exist that will make it easy to carry out the responsibilities involved. We are looking for 2 or 3 volunteers who can start thinking about how to make this a more successful event. Please contact Ann Granger, our Volunteer Coordinator (annthepotter@gmail.com)

We have started a discussion group on our Facebook page to brainstorm about how to improve sales at our two annual sales events. Please visit http://www.facebook.com/group.php?gid=79042014930&v=app_2373072738&ref=ts#!/topic.php?uid=79042014930&topic=14136 to add your comments, or feel free to contact a Board member with your ideas. We need everyone's input to make these events a success!

~ ~ ~ ~ ~

To Facebook or Not to Facebook — That is the Question?!

(With apologies to William Shakespeare)

An article submitted by Jim Dunning

Facebook is among the most powerful internet companies in the world. It has more than 400 million registered users, half of whom use it at least once a day spending approximately 500 billion minutes on the site each month. It is the most visited website in the US. Lately, we've been hearing a lot about problems involving security for private data uploaded to Facebook. According to a story in *The New York Times*, to manage your privacy on Facebook, you will need to navigate through 50 settings with more than 170 options. Facebook officials have said it wants to offer precise controls for social networking on the Internet. When questioned about recent changes to Facebook's privacy settings, officials have responded that users should not share information if they are not comfortable doing so.

If you want to see what Facebook says they are going to do with the information they collect from and about you, go to <http://www.facebook.com/policy.php>. As you scroll down to Section 8: How We Protect Information you come across the heart of the problem. The following excerpts are taken from that section:

- We do our best to keep your information secure, ...
- **Risks inherent in sharing information.** Although we allow you to set privacy options that limit access to your information, please be aware that no security measures are perfect or impenetrable. *We cannot* control the actions of other users with whom you share your information. *We cannot* guarantee that only authorized persons will view your information. *We cannot* ensure that information you share on Facebook will not become publicly available. *We are not responsible* for third party circumvention of any security measures on Facebook. *You can reduce these risks* by using common sense security practices such as choosing a strong password, using different passwords for different services, and using up to date antivirus software.
- **Changes.** We may change this Privacy Policy pursuant to the procedures outlined in the Facebook **Statement of Rights and Responsibilities**. Unless stated otherwise, our current privacy policy applies to all information that we have about you and your account. If we make changes to this Privacy Policy we will notify you by publication here and on the **Facebook Site Governance Page**.
- **Consent to Collection and Processing in the United States.** By using Facebook, you consent to having your personal data transferred to and processed in the United States.

What does all of this mean? As I read it, it means that they can and will use your information in pretty much whatever way they see fit. While you can opt out of some things it is often difficult and confusing to figure out just how to do that. Notice that for the most part YOU are responsible for safeguarding your personal information not Facebook. If you're going to be responsible, then you need to know how.

You're in Charge!

A good first step is to find out what you're facing. ReclaimPrivacy.org has a utility that you can use while you're signed into Facebook that will scan your privacy and profile settings and report on the relative exposure of your information. It doesn't make any decisions for you, but provides you with the information you need to make your own decisions. It uses a "stoplight" approach to its warnings. Items in green are privacy settings you already have locked down. Items in yellow are areas where some personal information is available to the world or to "friends of friends," which may as well be the world. Items in red indicate personal information that's open and available for the entire world to see, no matter who they may be or if they're logged in to Facebook themselves. In each case (except for green items) the utility will give you a link to the specific settings page that has the options on it. This way you can go right to the settings and make changes. Once you're finished making changes, you can re-scan your profile to see if its security has improved.

Other Sources

- 10 Privacy Settings Every Facebook User Should Know — <http://www.allfacebook.com/2009/02/facebook-privacy/>
- Facebook Security — <http://www.facebook.com/security>

- OnGuard Online provides practical tips from the federal government and the technology industry to help you be on guard against Internet fraud, secure your computer and protect your personal information — <http://www.onguardonline.gov/>

Since I started this article Facebook's attitude has been adjusted for them by public pressure (among others). They have begun to simplify their privacy settings and make them more accessible. For more information see their description of the changes on their Facebook Privacy Page (<http://www.facebook.com/privacy/explanation.php>).

~ ~ ~ ~ ~

Updated Membership Directory

By now you should have received a printed copy of The Clay Connection's 2010 Membership Directory. In addition to containing contact information on your fellow area potters who are members of our group, it also includes a list of places that offer ceramics classes in Virginia, Maryland and DC, as well as local suppliers and kiln repair shops. If you did not receive a directory or have corrections or updates to your information, please contact our Vice President for Membership, Barb Oksanen at barbo_2@hotmail.com.

~ ~ ~ ~ ~

Volunteer Opportunities

PR/Marketing ~ ~ The Clay Connection needs volunteers to assist with marketing and publicizing our sales and events. This involves maintaining the media contacts mailing list, writing and sending out press releases, contacting media representatives to ensure that our events are properly publicized, making and posting signs, etc.

Hospitality ~ ~ Volunteers purchase and set up refreshments for events (programs, sales, etc.) and act as hosts.

Sales ~ ~ Volunteers are needed for a standing committee to organize two sales events per year: the Mother's Day Spring Sale in Annandale and the Fall Holiday Sale in Vienna. One PR/Marketing volunteer and one hospitality volunteer would also participate in the Sales Committee.

High School Competition ~ ~ Volunteers are needed for a standing committee to organize this important annual event. One PR/Marketing volunteer and one hospitality volunteer would also participate in the Sales Committee.

Empty Bowls Liaison ~ ~ Volunteers are needed to serve as liaison with the Giving Circle of Hope. Responsibilities include organizing bowl-a-thons, obtaining commitments from members willing to donate bowls, establishing drop-off points for the bowls, etc.

We have easy-to-use guidelines for all of these volunteer jobs so you will not have to spend a lot of time figuring out how to carry out your duties. We are hoping to have 2 or 3 volunteers for each position so that the work does not all fall on one person. "Partial volunteers" are also welcome. That is, if you are interested in volunteering for the sales, say, but you feel that you could help organize one but not two sales a year, we can still use your help.

If you can help in any of these areas, please contact Ann Granger, Clay Connection Volunteer Coordinator, at AnnThePotter@gmail.com or 703-470-3038.

We Need Your Help!!!

~ ~ ~ ~ ~

Calendar of Upcoming Events

- ❖ **Saturday & Sunday, July 24 & 25, 2010 ~ ~ Teapot-Making Workshop with Dana Lehrer Danze ~ ~ 10 am to 4 pm**

This is a hands-on, two-day workshop. You'll be able to make a finished teapot in two parts. Workshop fee is \$50 for Clay Connection members and \$80 for nonmembers.

RSVP: Dana Lehrer Danze at danaclay8@msn.com. Questions? Call Dana at 703-525-9692

Location: Creative Clay Studios; 5704-D General Washington Drive, Alexandria VA.



- ❖ **Sunday, August 15, 2010 ~ ~ Bowl-a-thon at Creative Clay Studios**

The first bowl-a-thon was so much fun we've decided to start having them throughout the year. The aim is to start now to make bowls that will be donated to the Giving Circle of Hope for their Empty Bowls Supper in April 2011. This way we won't have a mad scramble for bowls at the last minute. Join us at Creative Clay Studios from 4 to 8 pm. Just bring your tools, some clay (reclaim is OK), and a snack share, cookies and refreshments will be provided. For additional information, contact: Barb Oksanen at barbo_2@hotmail.com

RSVP: Barb Oksanen at barbo_2@hotmail.com.

Location: Creative Clay Studios; 5704-D General Washington Drive, Alexandria VA.

- ❖ **Sunday, September 12, 2010 ~ ~ Using the Internet to Market Your Pottery with Jayne Shatz ~ ~ 1 to 3pm**

Jayne will give us an abridged version of her popular workshop about creating online networks to market your work. Learn to promote your business through Facebook, YouTube and Etsy, presenting your work on a global scale and not paying costly commissions to traditional galleries and shops. This workshop will be held at the Fred M. Packard Center.

RSVP: Dana Lehrer Danze at danaclay8@msn.com. Questions? Call Dana at 703-525-9692

Location: Fred M. Packard Center, 4022 Hummer Road, Annandale, Virginia. Free to Clay Connection members, \$10 for non-members.

❖ **Friday–Sunday, October 1–3, 2010 ~ ~ Making Glazes with John Britt.**

Mark your calendars! More information will be forthcoming so check your emails! You won't want to miss this event!

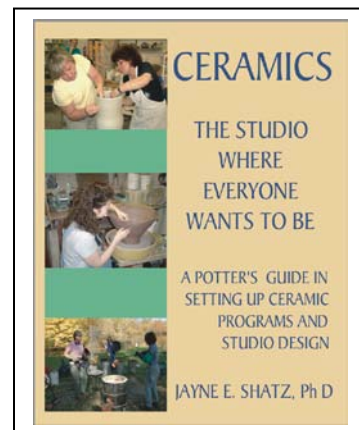
~ ~ ~ ~ ~

Member News and Achievements

Jayne Shatz's book *Ceramics, The Studio Where Everyone Wants To Be—A Potter's Guide In Setting Up Ceramic Programs and Studio Design* is now available for shipping.

If you are creating a studio at home, or are establishing a school program, this book will provide necessary information to get you started. The 82-page guide covers information on studio equipment; organizing a studio or classroom; curriculum outlines for primary to high school students as well as the adult learner; ergonomics and safety, and a clay and glaze notebook for cone six and ten.

This book will provide you with invaluable support as you launch your ceramic studio and program. You can purchase the book directly from Jayne for \$25.00 plus \$3.95 for shipping and handling, a total of \$28.95 (Visa or MasterCard accepted). To order, contact Jayne at: **Jayne Shatz Pottery**; 452 Laurel Valley Ct.; Arnold, MD, 21012; jesclay@aol.com.



~ ~ ~ ~ ~

Call For Entries

An Exciting New Exhibition Opportunity for Clay and Glass Artists

The Association of Clay and Glass Artists of California (ACGA) Clay & Glass National Juried Competition will take place January 22–March 4, 2011 in the City of Brea Art Gallery (near Los Angeles, California). The exhibit will be a gallery installation showcasing a wide range of handmade ceramic and glass artwork from across the United States.

The juror is Jo Lauria, a nationally recognized curator, historian and author specializing in contemporary crafts and decorative objects. She is the recent author of *Craft in America: Celebrating Two Centuries of Artists and Objects*, which is a companion book to the PBS series and traveling exhibition of the same name.

The competition is open to all forms of handmade clay and glass: functional, decorative and sculptural. The deadline for submission is October 30, 2010. The entry fees are \$15 for one piece, \$25 for two, and \$30 for three. Awards will be given. Go to www.acga.net and scroll to the right side of the homepage for a link to the prospectus.

The Association of Clay and Glass Artists of California (ACGA) is a non-profit membership organization begun in 1945. It is dedicated to establishing and maintaining high standards of craftsmanship and design in clay and glass. To learn more about the venue, the City of

Brea Art Gallery, visit www.breagallery.com. Direct all questions to 2011acganational@gmail.com.

~ ~ ~ ~ ~

Workhouse Arts Center

The Workhouse Arts Center will be accepting proposals for the spring and summer 2011 quarters in November 2010. If you are interested in teaching at the workhouse Arts Center please contact Debra Yarrington at 703-584-2909 or debrayarrington@lortonarts.org. The downloadable "Call-For-Classes Packet" for the spring and summer 2011 schedule will be available online in mid-November. Visit www.lortonarts.org for additional information.

~ ~ ~ ~ ~

Did you know that...

- ❖ **Twila Johnson is our Email Coordinator.** She is now using Constant Contact to improve our ability to email you with important member information. If you have not been receiving member emails, please contact Twila at twilajohnson@mac.com
- ❖ **The Potter's Council** offers individual health insurance to members? Visit the Potters Council website (potterscouncil.org) or <http://www.jlbghealth.com/home> for more info.
- ❖ The Clay Connection has a **Facebook** page at <http://groups.to/theclayconnection>. Become a member, post your photos, events and links, and start discussions with your colleagues!
- ❖ **You no longer need an ID/password** to enter any of the pages on the Clay Connection's website (www.theclayconnection.org). Please visit it often to stay up-to-date on Clay Connection information.
- ❖ **Why do we "throw" clay?** The Old English word *throwan* from which *to throw* comes, means to twist or turn. Going back even farther, the Indo-European root *ter- means to rub, rub by twisting, twist, turn. The German word *drehen*, a direct relative of to throw, means turn and is used in German for throwing. Because the activity of forming pots on the wheel has not changed since Old English times, the word throw has retained its original meaning in the language of pottery but has developed a completely different meaning in everyday usage. Those who say they throw pots are using the historically correct term. [From http://www.ceramicstoday.com/articles/why_throwing.htm]

~ ~ ~ ~ ~

Studio Tips and Shortcuts

- ❖ **To keep a form from distorting** when removing it from the wheel, lay a sheet of newsprint or thin paper across the rim of the form. The paper should be big enough to cover and extend over the entire opening of the pot. Trace the rim with your finger to seal the paper completely to the clay. The paper helps to provide equal tension across the pot in all horizontal directions, thus preventing the lip from going oval. Once you've

got the pot on a ware board, carefully and slowly pull the paper off the rim. Don't try to smooth out the rim until it's leather hard.

- ❖ **Easy way to recycle clay.** Put all your scraps (dry, wet, moist, whatever) in a closed bucket. Keep the clay pushed down and compacted with the end of a board (the end of a 2x4 works great, but don't leave the board in the bucket). Sprinkle a LITTLE water on top each time you add scraps, just enough to slick the top. If you add dry scraps, sprinkle a little more water on top and beat them down with the board. Keep the clay level. Keep the lid closed. It evens out and will be ready when you need it, if you like soft clay.
- ❖ **To flocculate a glaze.** First make sure there is some clay in your glaze recipe; Epsom salts won't flocculate the glaze without clay being present. If there is no clay, add 2% bentonite. Then make a saturated solution of Epsom salts in water. Just keep adding Epsom salts to, say, a pint of water, until no more will dissolve. Then start by adding 1 tablespoon of saturated Epsom salt solution per 1000 grams of dry glaze. If the glaze still settles, add another tablespoon. Do it carefully and slowly. If you add too much you can turn the glaze into gel.
- ❖ One way **to preserve the luster on Raku pottery** is to spray them with a protective coat of Krylon. This stops the copper from oxidizing with the air.

~ ~ These tips are from <http://www.garyrferguson.com/pottips.htm>

- ❖ To make tight or rough lids fit better and glide more smoothly on finished pottery, get a tube of valve grinding compound from an auto supply store. Squeeze 3 or 4 little blobs on your gallery, put your lid on, and spin back and forth for a few minutes. This works wonders!

~ ~ From Dana Lehrer Danze

~ ~ ~ ~ ~

Workshop Reviews

We invite all readers to send in their reviews of workshops and/or classes that they have attended. You can also send the basic information about the workshop together with your impressions and recommendations, and let the newsletter editor develop the write-up for the newsletter. So, don't let "I can't write" stop you from sharing your experiences with us!

- ❖ **23rd Annual North Carolina Clay Conference ~ ~ Asheboro, NC ~ ~ March 5–7, 2010**

The Archie Bray Foundation is not the only thing that the three world-class potters at the 23rd Annual North Carolina Clay Conference have in common. Lorna Meaden, Bruce Cochrane, and Sarah Jaeger captivated an audience of 175 potters, pottery students, and collectors over three days of demonstrations, exhibitions, gallery displays and personal interaction. We watched pots turn into pitchers sporting delicate decorations, vases with "attitude," covered casserole dishes generously "fleshed out," double-walled vessels punctuated by pierced exterior walls. Meaden, Cochrane, and Jaeger shared experience and vision as they energetically demonstrated skill, artistic statement, and technique—moving each piece of work from beginning to end—from raw material to fully decorated pots ready for firing.

Lorna Meaden works in porcelain: throwing, altering, stretching the clay, and shaping the forms that will direct her final surface decoration. Using a process called *mishima*, she echoes lines already created in the pot's form by painting a jet black slip on lines incised at the leather-hard stage. At the bisque stage she emphasizes these lines, dividing the planes of the form's surface into linear spaces and adds bold color with glazes and slips. Her result: surfaces rich in ornamentation. She attributes her artistic vision to the influence of textile and costume on her work and the writing of James Trilling in *The Language of Ornament*. Finally, Lorna soda fires her pieces in heavy reduction to get an intimate interplay between all the elements of her raw materials. Her site is <http://lornameaden.com/>. Read more at <http://ceramicartsdaily.org/ceramic-art-and-artists/functional-pottery/more-is-more-lorna-meaden/>

Bruce Cochrane approaches his work from its parts. Using components crafted and carefully engineered to result in his desired designs, Bruce combines wheel throwing, slab building, and joining techniques that create objects "to be experienced on multiple levels." He develops templates for individual parts, coordinates their assembly, alters some lines and adds some lines—thereby tailoring slabbed elements to thrown elements. "The way an object carries, lifts, cradles, pours and contains are properties which I strive to make engaging for the user, offering more than just convenience."

This artistic vision is evident in his nested bowls, 4-part lidded jars, double-walled pierced cylinder forms, lidded bowls joined to boat-shaped foot rings, even the iconic teapot—all designed, created, crafted from multiple parts to reflect his personal connection with ceramic history and with ancient Chinese bronzes. To see some of Bruce's work visit: <http://www.akardesign.com/shows/index.asp?iShowID=52> Also see: http://www.archiebray.org/workshops_classes/workshops_2010/workshop-cochrane-2010.html

Sarah Jaeger alters thrown pots, aligning form and function through her personal "delight of pattern," finding the fullness of the shape, and relying on fire to yield a seamless flow around the pot. Using surface decoration to amplify form, Sarah spends space—dividing planes into sections with bold color. Form and function wed. Layering glazes, dark over light, she moves a pot on to the relationship between these elements which she knows fire will give her. Sarah Jaeger thinks of her work as practical, creative, useful, and generous.

Her art has been acclaimed nationally (United States Target Artists Fellow, 2006) and televised (PBS, *Craft in America*); it has been collected, demonstrated, displayed; and her work is constantly in use in kitchens, on tables, in human hands—working its way into the hearts of pottery lovers and collectors. See her work at <http://www.sarahjaeger.com/HTML/contact.html> and watch clips from the PBS documentary.

This trio of outstanding potters, Lorna Meaden, Bruce Cochrane, Sarah Jaeger, gave their audience more than this potter could ask for! Having the opportunity to see and hear them—their interaction through questions and answers with us was informative, personal, and generous—to be able to learn from them and the entire experience of the 23rd North Carolina Clay Conference was an honor made possible by the scholarship I won through a drawing at the Clay Connect Conference in Front Royal.

Luck was NEVER this good to me! But there is more...

Dwight Holland, one of the organizers of this particular event each year, is a collector par excellence, and is as generous as our guest potters were. He opened his home to

all of us—175 people for dinner!—to see his own collection spanning over fifty years. One of my own pottery instructors, Martha Legg, had told our class about the “pig pickin” on Saturday nights at this conference, but she too was at a loss for words. To help you feel what I experienced there, think of all the pots you have ever seen in any one place—a gallery, a show, an exhibition—then multiply that by 5—or even 10—and then add 175 people, the gracious appointments of a sophisticated country home, and an abundance of delectable Southern-style cooking. Now you are close!

Dwight’s contributions to the annual North Carolina Clay Conference are as generous as his hospitality. The Randolph Arts Guild provided fine accommodations through the W. H. Moring, Jr. Fine Arts Center, and Highwater Clay hosted one of our meals. This is a conference not to miss and next year’s event will focus on Chinese pottery. See <http://www.randolphartsguild.com/programs/artist-residency.html>

By Sunday, I and my three potter companions were saturated. Still ahead were opportunities to learn about online marketing venues, understanding and correcting glazing faults, and an engaging art criticism session. All presenters were well-informed professionals in their field. What a fitting conclusion to an artistic “high”—down to earth ways to “get ‘er done.”

Many thanks to the Clay Connection for making this educational and inspiring opportunity available to me! I continue to strive for excellence in my own work and enthusiastically share my clay experiences as other potters have done with me.

*~ ~ Nan Fooks
Blue Ridge Potters Guild, Roanoke, VA*

~ ~ ~ ~ ~

Upcoming Workshops & Events

Also, please check our website for lists of classes and workshops in Maryland, Virginia, and the District of Columbia. We encourage members who attend these workshops to share their experiences with us.

❖ Nan Rothwell Workshops (Faber, VA)

Altering Thrown Forms ~ ~ August 14–15, 2010. A hands-on workshop. Starting with round wheel-thrown components, we’ll work on squared and oval shapes, and on ways to texture and alter thrown pots while they are still on the wheel. During this 2-day workshop, we’ll make and finish several projects which students may take home leather-hard. Fee: \$200 includes clay, 3 extruding tools and lunch both days. Enrollment limited to 8 students.

Chris Campbell Workshop. Nan is investigating the possibility of hosting a workshop with Chris Campbell at her Faber, VA studios sometime during 2011. Chris works with colored porcelain using very interesting techniques. You can see examples of her work at her [website www.ccpottery.com](http://www.ccpottery.com). If you might be interested in attending a Chris Campbell workshop in Nelson County, Virginia (30 miles southwest of Charlottesville and 150 miles southwest of the DC area), please contact Nan at the number below. At this time Nan is NOT asking for any kind of commitment, but simply trying to test the waters. Does it sound like something you might want to attend?

For additional information, contact Nan Rothwell at 434-263-4023 or www.nanrothwellpottery.com

❖ *Creative Clay Studios (Alexandria, VA)*

Raku Workshops ~ ~ June 16 & July 10, 2010 ~ ~ 4:30 to 8:30 pm. There is a base fee of \$60 for the workshop which will include a full shelf, typically 4 or 5 pieces. The price per each additional shelf is \$20.

Try-It Workshops ~ ~ June 26 & July 24, 2010 ~ ~ 7 to 9 pm. Studio tour and summarized lesson of the throwing process. Then you'll get on the pottery wheel to make your own art. Fee: \$35 includes all materials.

Wheel-Throwing Boot Camp ~ ~ July 19–22 & July 30, 2010 ~ ~ 5 to 8pm. Intensive 5 days of classes going over the basics of throwing and trimming on the potter's wheel, along with dip glazing methods. Monday and Tuesday: Throwing. Wednesday and Thursday: Trimming. Friday of the following week: Glazing. \$150.

Wheel-Throwing Boot Camp ~ ~ August 2–5 & August 13, 2010 ~ ~ 10am to 1pm. Intensive 5 days of classes going over the basics of throwing and trimming on the potter's wheel, along with dip glazing methods. Monday and Tuesday: Throwing. Wednesday and Thursday: Trimming. Friday of the following week: Glazing. \$150.

The Basics with a Focus on Centering ~ ~ July 31, 2010 ~ ~ 12 to 3pm. This workshop is for beginner to intermediate potters who are still having trouble centering and throwing consistently. We will go over the basic

steps of wheel throwing, but will spend the majority of the 3-hour class focusing on centering. This workshop is B.Y.O.C. (Bring Your Own Clay) and does not include firing or glazing. It will be very intensive, so bring some extra energy and an open mind. \$35

For additional information, please visit <http://www.creativeclaypottery.com/> or contact Ed Bull at 703.750.9480 or by email at oneibull@msn.com.

❖ *The Art League (Alexandria, VA)*

Fong Choo Teapot Workshop ~ ~ September 10–12, 2010. Recognized for his signature miniature teapots, Fong Choo will demonstrate in detail the teapot form with reference to proportion: from the large to the small and from the whimsical to the utilitarian.

The Clay Connection

P.O. Box 3214
Merrifield, VA 22116-3214

<http://www.theclayconnection.org>
email: potter@theclayconnection.org

The Clay Connection is a nonprofit organization of potters mainly from the Washington D.C. metropolitan area. Members range from beginners to hobbyists to full time professionals who work in a broad range of styles. The organization offers programs designed to provide its members educational and networking opportunities.

Board Members

President

Marianne Cordyack

Vice President for Programs

Dana Lehrer Danze

Vice President for Membership

Barbara Oksanen

Recording Secretary

Aileen Redding

Treasurer

Curtis Haymore

Conference Planning Team Leader

Marianne Cordyack

Volunteer Coordinator

Ann Granger

Past President

Roberta Couver

Hospitality

Vacant

Internet Resources

Jim Dunning

Lending Library

Ed Bull
Bruce Ciske

Newsletter

Graciela Testa Lynt
(graciela@glyntpottery.com)

There will be discussions on glazing with the use of the spray gun and brush layering to achieve the jewel tone and other effects. There will be ongoing in-studio discussions, tool making demonstrations, and cane handle demonstrations. In the process Fong Choo will discuss the issues of networking, pricing, and presentational aspects of the work that have been so prevalent in the success of his work. Examples of the artist's work will be on display for use as visual references. Friday evening (7 to 9 pm) will include a slide presentation of his work ranging from early to current. Workshop hours on Saturday and Sunday are 10am to 4 pm. \$170.

For more information and to register:

http://school.theartleague.org/course_desc.php?class_id=14637

❖ *Jayne Shatz Workshops (Arnold, MD)*

Jayne offers private sessions and workshops in her home studio year round. Next spring, she will be offering three workshops at Anne Arundel Community College. Several workshops are offered in the areas of environmental ceramics, large scale vessels, the master ceramist, wheel-thrown pottery, hand-built pottery, glazes, ceramic sculpture, business workshops and lectures, and ceramic history workshops. Check Jayne's website for additional information: <http://www.jayneshatzpottery.com/>

❖ *Manassas Clay (Manassas, VA)*

Fused Glass Plates and Bowls ~ ~ June 24 and July 1, 2010 ~ ~ 6:30 to 9pm. Two-part workshop will teach the fundamentals of kiln-formed glass to design your own fused glass plates and bowls. You will leave the workshop with your own 8" fused glass bowl or plate. No previous experience required. Workshop fee: \$140; materials fee: \$45.

Summer Camp for Kids. Manassas Clay Summer Camp is now registering for Kids Handbuilding — June 21–25; July 12–16, August 9–13, August 16–20. Teen Wheel Classes, July 19–23, July 26–30, August 2–6. Classes run from 10:30am–12:30pm. Call 703-330-1040 for more information.

The next session of classes is August 8 to October 2, 2010. For information, contact: 703-330-1040 or <http://www.manassasclay.com>.

❖ *Baltimore Clayworks (Baltimore, MD)*

Contact: <http://www.baltimoreclayworks.org/index.html>

❖ *Workhouse Art Center (Lorton, VA)*

For information contact: Dale Marhanka 703-584-2982, dalemarhanka@lortonarts.org

~ ~ ~ ~ ~

Classified Ads

This is a new item in our newsletter! If you have pottery equipment, tools or supplies that you wish to buy or sell, please send your information to the editor (graciela@glyntpottery.com) before print dates: March 21, June 21, September 23 and December 21.

- ❖ **Axner Fireball Oxyprobe** (<http://axner.com/oxygen-probes.aspx>) ~ ~ I paid \$780 for it and new ones are now selling for \$835. I used it about 6 times and it works well, but I found it was not what I needed for my salt kiln. I always removed the probe before salting, as per instructions from Nils Lou who uses one in his salt kiln. It has been tested in a reduction kiln with good results. ~ ~ Asking \$550. ~ ~ Contact Marianne Cordyack at marianne@cordyack.com.
- ❖ **Tired of wedging reclaimed clay!** Looking for a de-airing pugmill for my small studio. Contact Grace at graciela@glyntpottery.com.

~ ~ ~ ~ ~

From the President

I hope you are enjoying the beginning of summer despite this crazy heat. I am on my way up to my salt kiln in West Virginia to do a firing—not exactly the thing to do when it is 100 degrees, start a 2300+ degree fire! :-)

In the past, The Clay Connection activities have slowed down during the summer while most people are on vacation. However, Dana Danze, Vice President of Programs, has scheduled two great activities to keep you thinking about clay this summer! She will be teaching a teapot workshop at Creative Clay Studios on July 24 and 25. Dana is a wonderful potter and teacher, and she will have you comfortably making those pesky teapots by the end of the weekend!

She has also scheduled a Bowl-a-Thon for Sunday, August 15, also at Creative Clay Studios. During a bowl-a-thon the group works together to make lots of bowls that will eventually be given to The Giving Circle of Hope to be used for their Empty Bowls Supper. The last bowl-a-thon we did in February was great fun! Creative Clay has a double-decker fan shelf, which means we were able to throw, place the bowls under the fan for 30 to 45 minutes, and then they were ready to trim. We made over 70 bowls that night! What a great feeling... and we all had fun working together towards a worthy cause!

There are many other clay-related activities going on in our area, and you can check those out on our website www.theclayconnection.org

Have a great summer!

~ ~ Marianne Cordyack

MEMBERSHIP REGISTRATION FORM

October 2009 to September 2010

The Clay Connection welcomes your membership. Complete this form and send it with a check or money order for annual dues of **\$35** payable to The Clay Connection to:

THE CLAY CONNECTION
c/o Membership Director
Post Office Box 3214
Merrifield, VA 22116-3214

The membership year begins in October and ends the following September. Individuals can become members at any time during the year; however, all memberships expire on 30 September. The membership fee is not prorated.

Mr. Ms. Mrs. Dr. New Member Renewing Member

Name: _____

Address: _____

City: _____ State: _____ Zip Code _____

Telephone Number(s): _____

Email Address: _____

Areas of interest: _____

Local Pottery Affiliation: _____

May we publish your contact information in the membership directory? Yes No

The Clay Connection has no paid staff and relies on active membership participation to ensure continued success.

Please select up to 3 of the following activities and check the appropriate boxes to indicate the activities suitable for your involvement.

- | | |
|--|---|
| <input type="checkbox"/> Biennial Clay Conference | <input type="checkbox"/> Membership |
| <input type="checkbox"/> Graphic Design | <input type="checkbox"/> Newsletter |
| <input type="checkbox"/> Workshop Setup | <input type="checkbox"/> Publicity (external) |
| <input type="checkbox"/> Empty Bowls, Bowl Collections | <input type="checkbox"/> Publicity (internal) |
| <input type="checkbox"/> High School Show | <input type="checkbox"/> Shows & Sales |
| <input type="checkbox"/> Hospitality & Holiday Events | <input type="checkbox"/> Volunteer Coordination |

Please call me on an as-needed basis

You will be contacted when volunteers are needed for your chosen activities.

Do you have any suggestions for future educational programs and events; we would love to hear about them. _____

